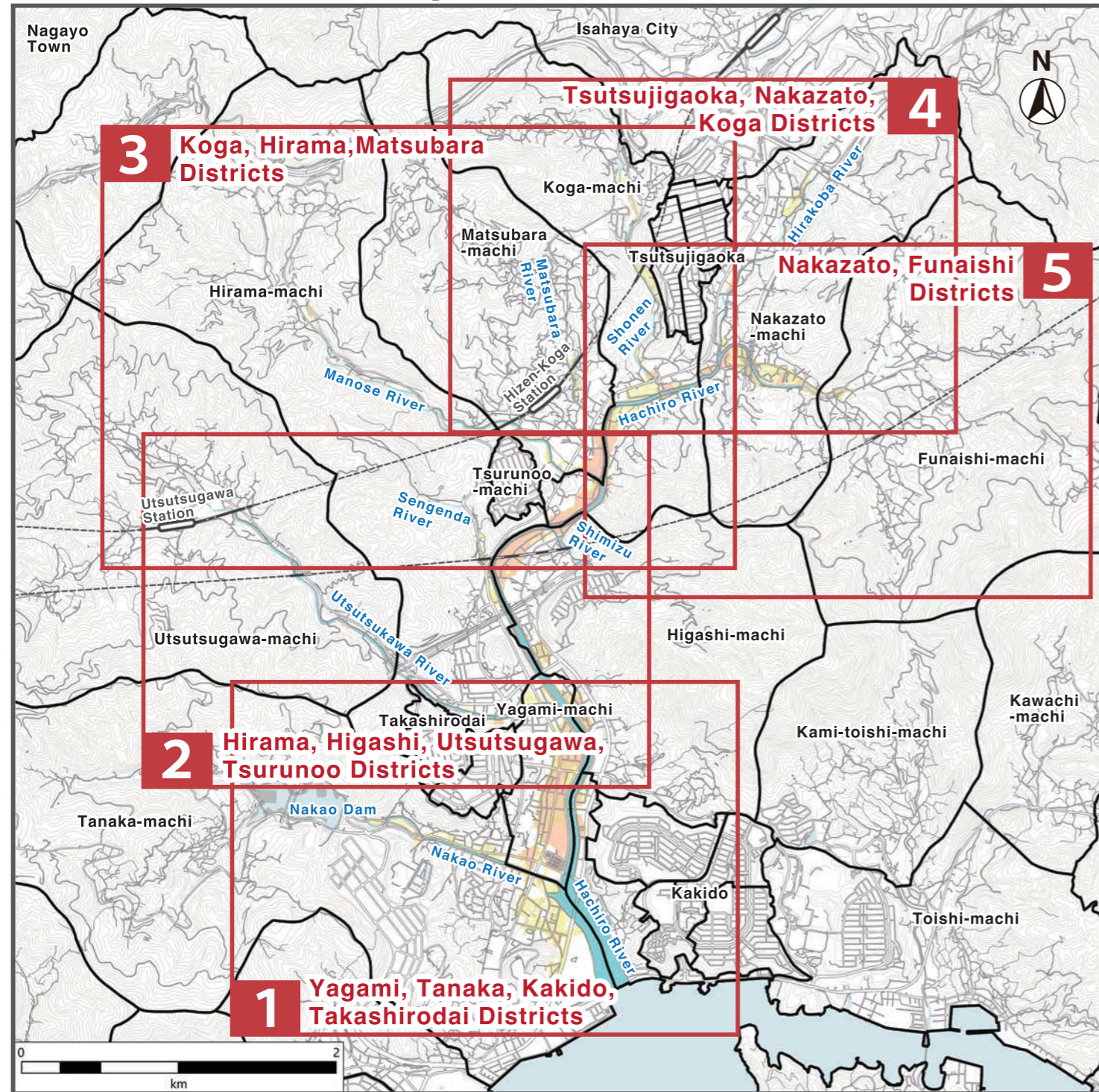


Flood Hazard Map (Overall View)



This map was made with the approval of the mayor of Nagasaki and reproductions of survey results made by the city. (Approval Number R4FYNCP #3)

This flood hazard map shows "Flood Zones", "Flood Levels"^{*1}, and "Safety Evacuation Shelters" in the event that Hachiro River^{*2} floods from the expected maximum amount of rainfall (597 mm of rainfall in 6 hours for the Hachiro River basin).

However, areas outside of these risk zones may experience flooding due to overflow of rivers other than Hachiro River^{*2} or inland flooding and/or the presumed level of flooding may differ in reality.

*1 Flood risk zones are based on a map of flood risk zones designated by the Nagasaki Prefectural Government on March 12, 2021 in accordance with the Flood Control Act and the results of flood simulations conducted by the Nagasaki Prefectural Government.

*2 Overflow-prone waterways: The Hachiro River System, which includes the Hachiro River, Hiraokoba River, Shonen River, Matsubara River, Manose River, Sengenda River, Shimizu River, Utsutsukawa River, and Nakao River.

八郎川水系洪水ハザードマップ

Hachiro River System Flood Hazard Map

This hazard map shows the presumed "Level of Flooding" and the location of "Safety Evacuation Shelters" in the event that Hachiro River floods from the expected maximum amount of rainfall.

Nagasaki City's terrain makes it is easy for buildings to suffer damage during heavy local downpours.

It is important to know beforehand which areas are risk areas and how to safely evacuate from them.

If flooding happens, first take action to protect your life!

- Move away from **dangerous areas*** and gather information about the disaster.
*Dangerous Areas: Flood Risk Zone, Structural & Other Flood Damage Risk Zones
- As soon as an evacuation announcement is made, evacuate to **safe areas***.
*Safe Areas: Safety Evacuation Shelters/Areas, buildings taller than two stories
- Ask for help from any Japanese people around you.

Point to communicate when you're in a hurry!
急いでいるときは、指で差して伝えよう！

Please help me.
助けてください。

I cannot speak Japanese.
日本語が話せません。

Please take me to a Safety Evacuation Shelter.
避難所に連れて行ってください。

Nagasaki City Wi-Fi
How to Get Online
You will have access for 60 minutes.
① Select "Nagasaki_City_Wi-Fi" on your smartphone.
② Enter your e-mail address to access Wi-Fi.

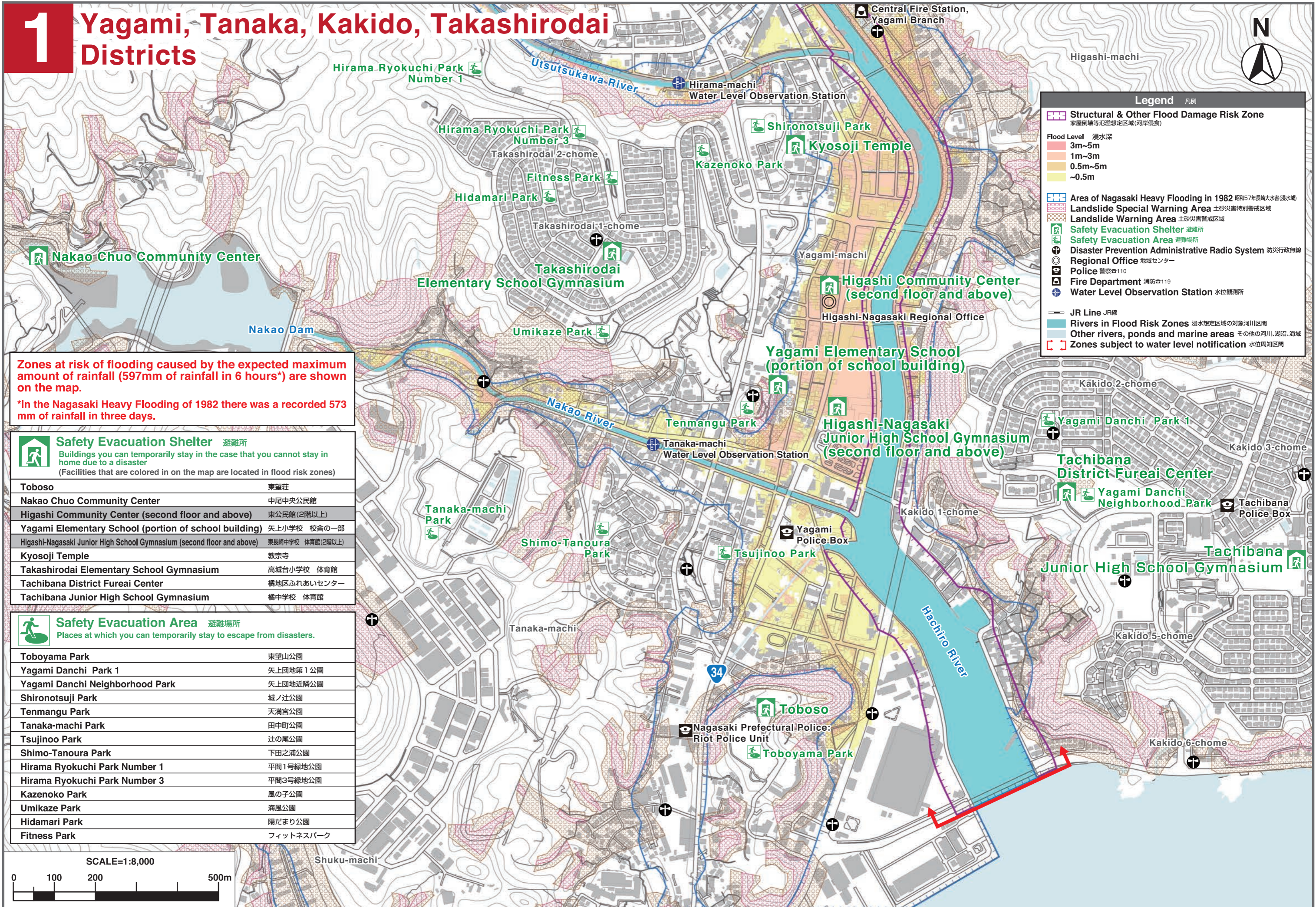
Evacuation Information 避難情報
*This hazard map displays the location of "Safety Evacuation Shelters (buildings) and Areas (spaces)" to which you can go in the event of the most severe rainfall.
Scan this QR code to check if evacuation shelters are open or how congested they are.
Ajisai Call TEL:095-822-8888

Information will be made available here about life in Nagasaki in multiple languages.
Nagasaki City International Affairs Division Facebook

For detailed disaster prevention information, scan the QR code!
Nagasaki City Website Flood Hazard Map page



1 Yagami, Tanaka, Kakido, Takashirodai Districts



Zones at risk of flooding caused by the expected maximum amount of rainfall (597mm of rainfall in 6 hours*) are shown on the map.

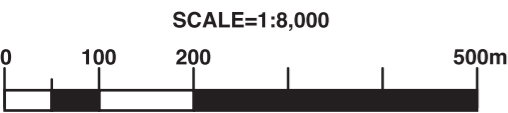
***In the Nagasaki Heavy Flooding of 1982 there was a recorded 573 mm of rainfall in three days.**

Safety Evacuation Shelter 避難所
Buildings you can temporarily stay in the case that you cannot stay in home due to a disaster (Facilities that are colored in on the map are located in flood risk zones)

Toboso	東望荘
Nakao Chuo Community Center	中尾中央公民館
Higashi Community Center (second floor and above)	東公民館(2階以上)
Yagami Elementary School (portion of school building)	矢上小学校 校舎の一部
Higashi-Nagasaki Junior High School Gymnasium (second floor and above)	東長崎中学校 体育館(2階以上)
Kyosoji Temple	教宗寺
Takashirodai Elementary School Gymnasium	高城台小学校 体育館
Tachibana District Fureai Center	橋地区ふれあいセンター
Tachibana Junior High School Gymnasium	橋中学校 体育館

Safety Evacuation Area 避難場所
Places at which you can temporarily stay to escape from disasters.

Toboyama Park	東望山公園
Yagami Danchi Park 1	矢上団地第1公園
Yagami Danchi Neighborhood Park	矢上団地近隣公園
Shironotsuji Park	城ノ辻公園
Tenmangu Park	天満宮公園
Tanaka-machi Park	田中町公園
Tsujinoo Park	辻の尾公園
Shimo-Tanoura Park	下田之浦公園
Hirama Ryokuchi Park Number 1	平間1号緑地公園
Hirama Ryokuchi Park Number 3	平間3号緑地公園
Kazenoko Park	風の子公園
Umikaze Park	海風公園
Hidamari Park	陽だまり公園
Fitness Park	フィットネスパーク

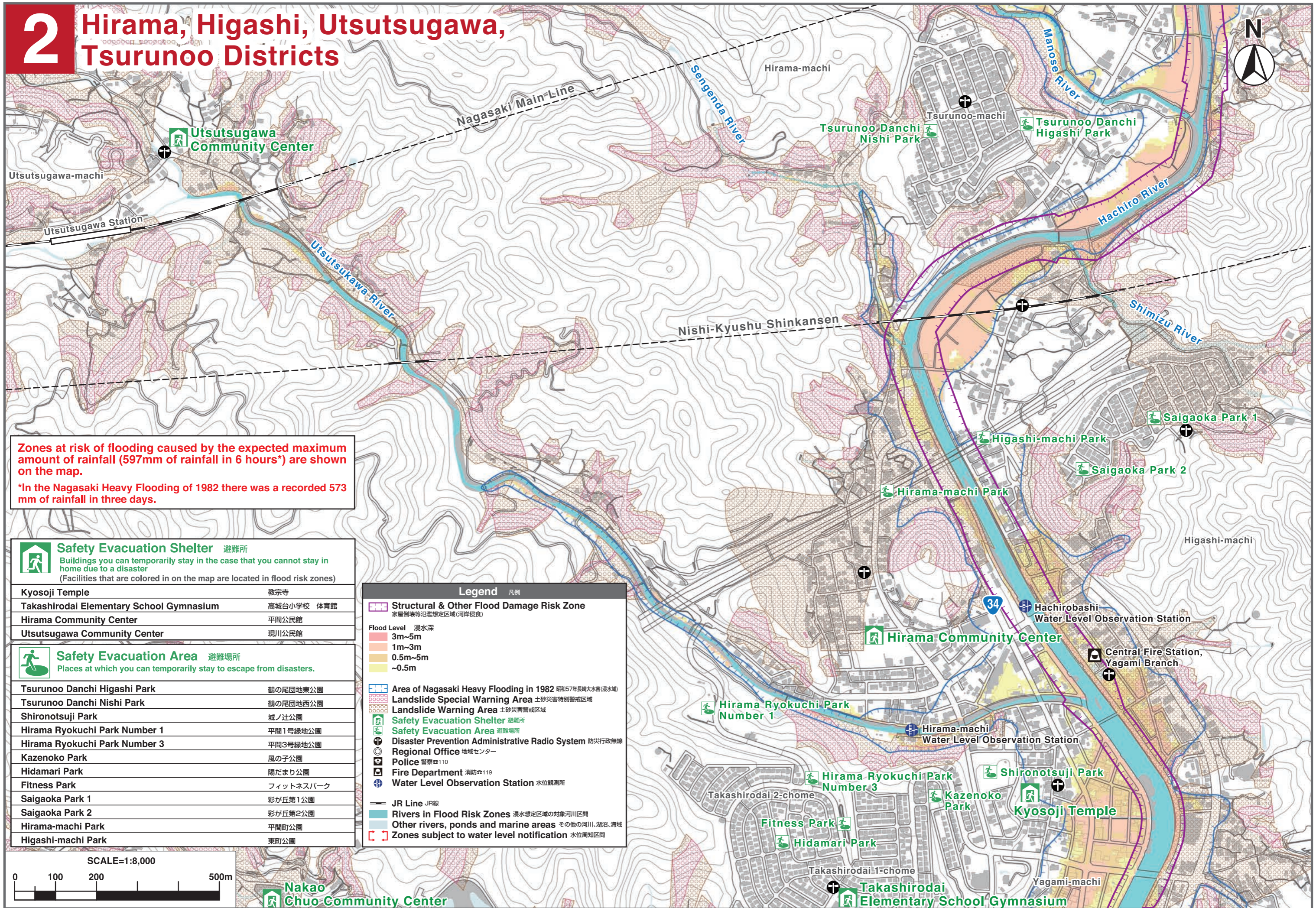


1 *This hazard map shows the presumed level of flooding due to an overflow of the Hachiro River System, which includes the Hachiro River, Hirakoba River, Shonen River, Matsubara River, Manose River, Sengenda River, Shimizu River, Utsutsukawa River, and Nakao River. However, areas outside of these risk zones may experience flooding and/or the presumed level of flooding may differ in reality.

2 *This map displays the location of "Safety Evacuation Shelters (buildings) and Areas (spaces) to which you can go in the event of the most severe rainfall."

2

Hirama, Higashi, Utsutsugawa, Tsurunoo Districts



Zones at risk of flooding caused by the expected maximum amount of rainfall (597mm of rainfall in 6 hours*) are shown on the map.
 *In the Nagasaki Heavy Flooding of 1982 there was a recorded 573 mm of rainfall in three days.

Safety Evacuation Shelter 避難所
 Buildings you can temporarily stay in the case that you cannot stay in home due to a disaster
 (Facilities that are colored in on the map are located in flood risk zones)

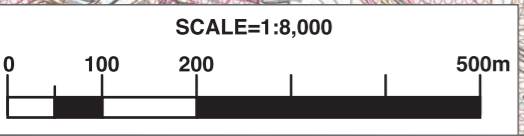
Kyosoji Temple	教宗寺
Takashirodai Elementary School Gymnasium	高城台小学校 体育館
Hirama Community Center	平間公民館
Utsutsugawa Community Center	現川公民館

Safety Evacuation Area 避難場所
 Places at which you can temporarily stay to escape from disasters.

Tsurunoo Danchi Higashi Park	鶴の尾団地東公園
Tsurunoo Danchi Nishi Park	鶴の尾団地西公園
Shironotsuji Park	城ノ辻公園
Hirama Ryokuchi Park Number 1	平間1号緑地公園
Hirama Ryokuchi Park Number 3	平間3号緑地公園
Kazenoko Park	風の子公園
Hidamari Park	陽だまり公園
Fitness Park	フィットネスパーク
Saigaoka Park 1	彩が丘第1公園
Saigaoka Park 2	彩が丘第2公園
Hirama-machi Park	平間町公園
Higashi-machi Park	東町公園

Legend 凡例

- Structural & Other Flood Damage Risk Zone 家屋倒壊等氾濫想定区域(河岸侵食)
- Flood Level 浸水深
 - 3m~5m
 - 1m~3m
 - 0.5m~5m
 - ~0.5m
- Area of Nagasaki Heavy Flooding in 1982 昭和57年長崎大水害(浸水域)
- Landslide Special Warning Area 土砂災害特別警戒区域
- Landslide Warning Area 土砂災害警戒区域
- Safety Evacuation Shelter 避難所
- Safety Evacuation Area 避難場所
- Disaster Prevention Administrative Radio System 防災行政無線
- Regional Office 地域センター
- Police 警察☎110
- Fire Department 消防☎119
- Water Level Observation Station 水位観測所
- JR Line JR線
- Rivers in Flood Risk Zones 浸水想定区域の対象河川区間
- Other rivers, ponds and marine areas その他の河川、湖沼、海域
- Zones subject to water level notification 水位通知区間



3 *This hazard map shows the presumed level of flooding due to an overflow of the Hachiro River System, which includes the Hachiro River, Hirakoba River, Shonen River, Matsubara River, Manose River, Sengenda River, Shimizu River, Utsutsukawa River, and Nakao River. However, areas outside of these risk zones may experience flooding and/or the presumed level of flooding may differ in reality.

4 *This map displays the location of "Safety Evacuation Shelters (buildings) and Areas (spaces) to which you can go in the event of the most severe rainfall."

3

Koga, Hirama, Matsubara Districts

Azebetto-machi Community Center

Legend 凡例

- Structural & Other Flood Damage Risk Zone** 家屋倒壊等氾濫想定区域(河岸侵食)
- Flood Level 浸水深**
 - 3m~5m
 - 1m~3m
 - 0.5m~5m
 - ~0.5m
- Area of Nagasaki Heavy Flooding in 1982** 昭和57年長崎大水害(浸水域)
- Landslide Special Warning Area** 土砂災害特別警戒区域
- Landslide Warning Area** 土砂災害警戒区域
- Safety Evacuation Shelter** 避難所
- Safety Evacuation Area** 避難場所
- Disaster Prevention Administrative Radio System** 防災行政無線
- Regional Office** 地域センター
- Police** 警察 110
- Fire Department** 消防 119
- Water Level Observation Station** 水位観測所
- JR Line** JR線
- Rivers in Flood Risk Zones** 浸水想定区域の対象河川区間
- Other rivers, ponds and marine areas** その他の河川、湖沼、海域
- Zones subject to water level notification** 水位周知区間

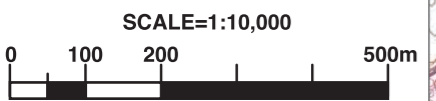
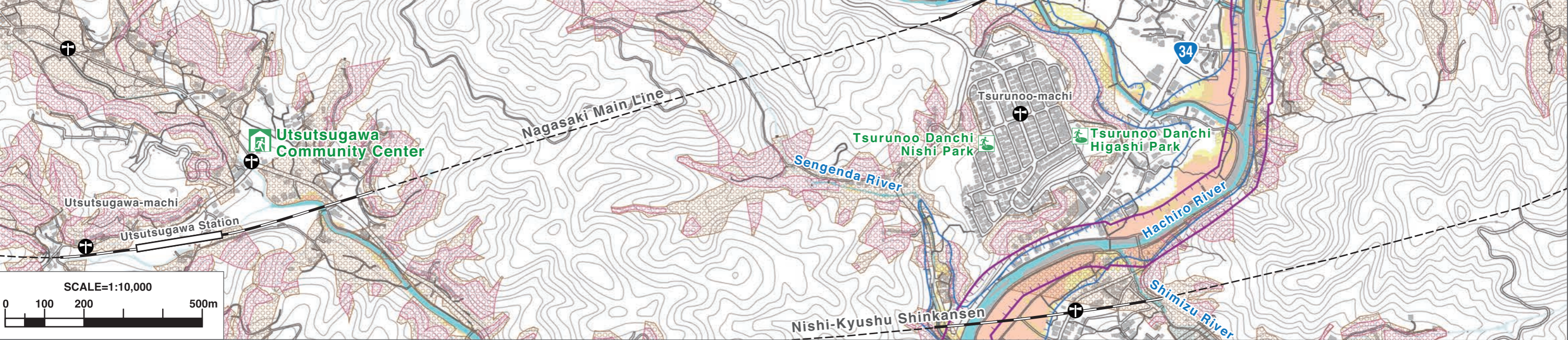
Zones at risk of flooding caused by the expected maximum amount of rainfall (597mm of rainfall in 6 hours*) are shown on the map.
 *In the Nagasaki Heavy Flooding of 1982 there was a recorded 573 mm of rainfall in three days.

Safety Evacuation Shelter 避難所
 Buildings you can temporarily stay in the case that you cannot stay in home due to a disaster
 (Facilities that are colored in on the map are located in flood risk zones)

Koga Elementary School Gymnasium	古賀小学校 体育館
Koga District Civic Center	古賀地区市民センター
Manose Community Center	間ノ瀬公民館
Shonen Community Center	正念公民館
Tsutsujigaoka Community Center	つつじが丘公民館

Safety Evacuation Area 避難場所
 Places at which you can temporarily stay to escape from disasters.

Tsurunoo Danchi Higashi Park	鶴の尾団地東公園
Tsurunoo Danchi Nishi Park	鶴の尾団地西公園
Koga Danchi Kita Park	古賀団地北公園
Tsutsujigaoka Chuo Park	つつじが丘中央公園
Matsubara-Uwatoko Park	松原上床公園



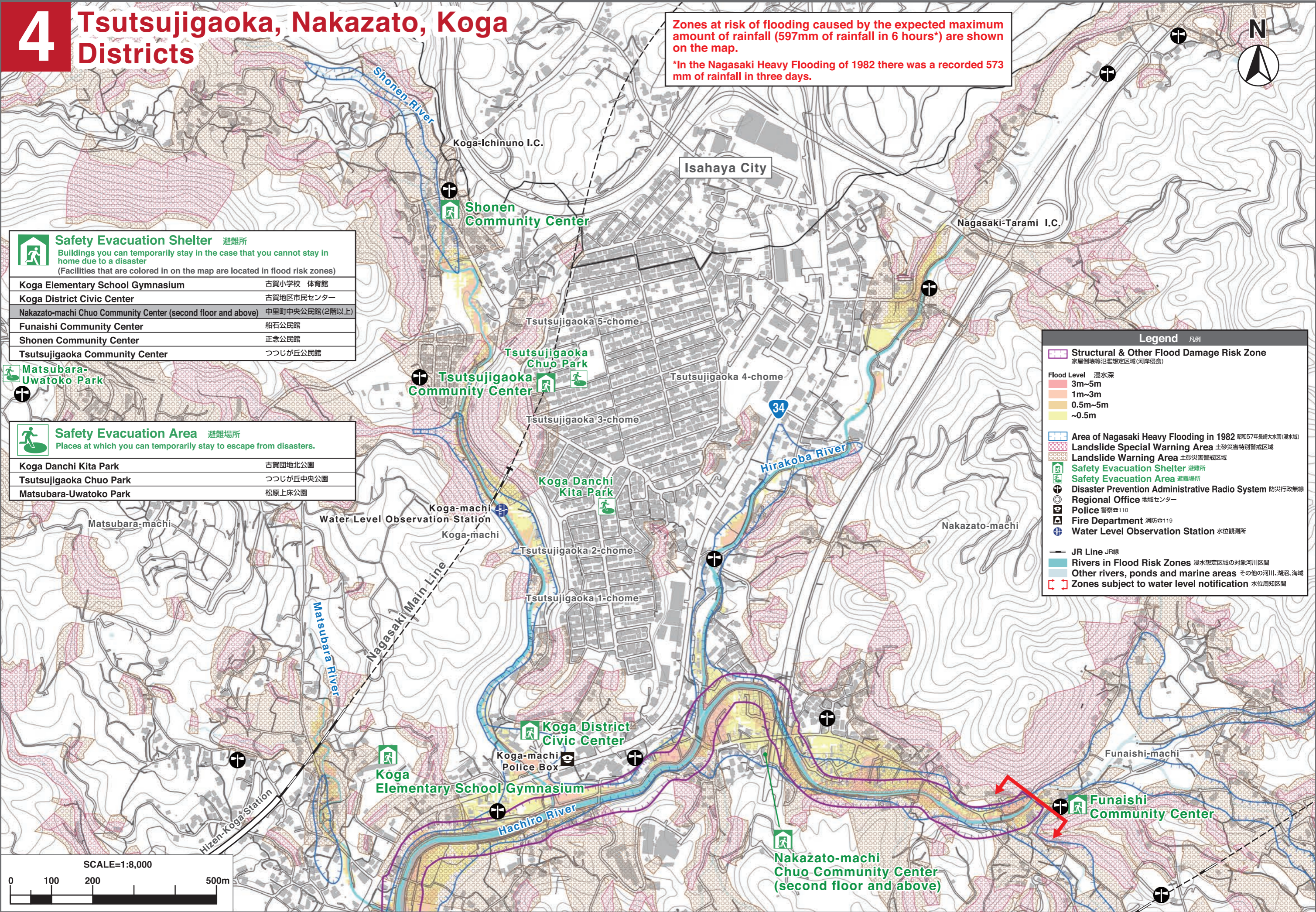
5 *This hazard map shows the presumed level of flooding due to an overflow of the Hachiro River System, which includes the Hachiro River, Hirakoba River, Shonen River, Matsubara River, Manose River, Sengenda River, Shimizu River, Utsutsukawa River, and Nakao River. However, areas outside of these risk zones may experience flooding and/or the presumed level of flooding may differ in reality.

6 *This map displays the location of "Safety Evacuation Shelters (buildings) and Areas (spaces) to which you can go in the event of the most severe rainfall.

4

Tsutsujigaoka, Nakazato, Koga Districts

Zones at risk of flooding caused by the expected maximum amount of rainfall (597mm of rainfall in 6 hours*) are shown on the map.
 *In the Nagasaki Heavy Flooding of 1982 there was a recorded 573 mm of rainfall in three days.



Safety Evacuation Shelter 避難所
 Buildings you can temporarily stay in the case that you cannot stay in home due to a disaster
 (Facilities that are colored in on the map are located in flood risk zones)

Koga Elementary School Gymnasium	古賀小学校 体育館
Koga District Civic Center	古賀地区市民センター
Nakazato-machi Chuo Community Center (second floor and above)	中里町中央公民館(2階以上)
Funaiishi Community Center	船石公民館
Shonen Community Center	正念公民館
Tsutsujigaoka Community Center	つつじが丘公民館

Safety Evacuation Area 避難場所
 Places at which you can temporarily stay to escape from disasters.

Koga Danchi Kita Park	古賀団地北公園
Tsutsujigaoka Chuo Park	つつじが丘中央公園
Matsubara-Uwatoko Park	松原上床公園

Legend 凡例

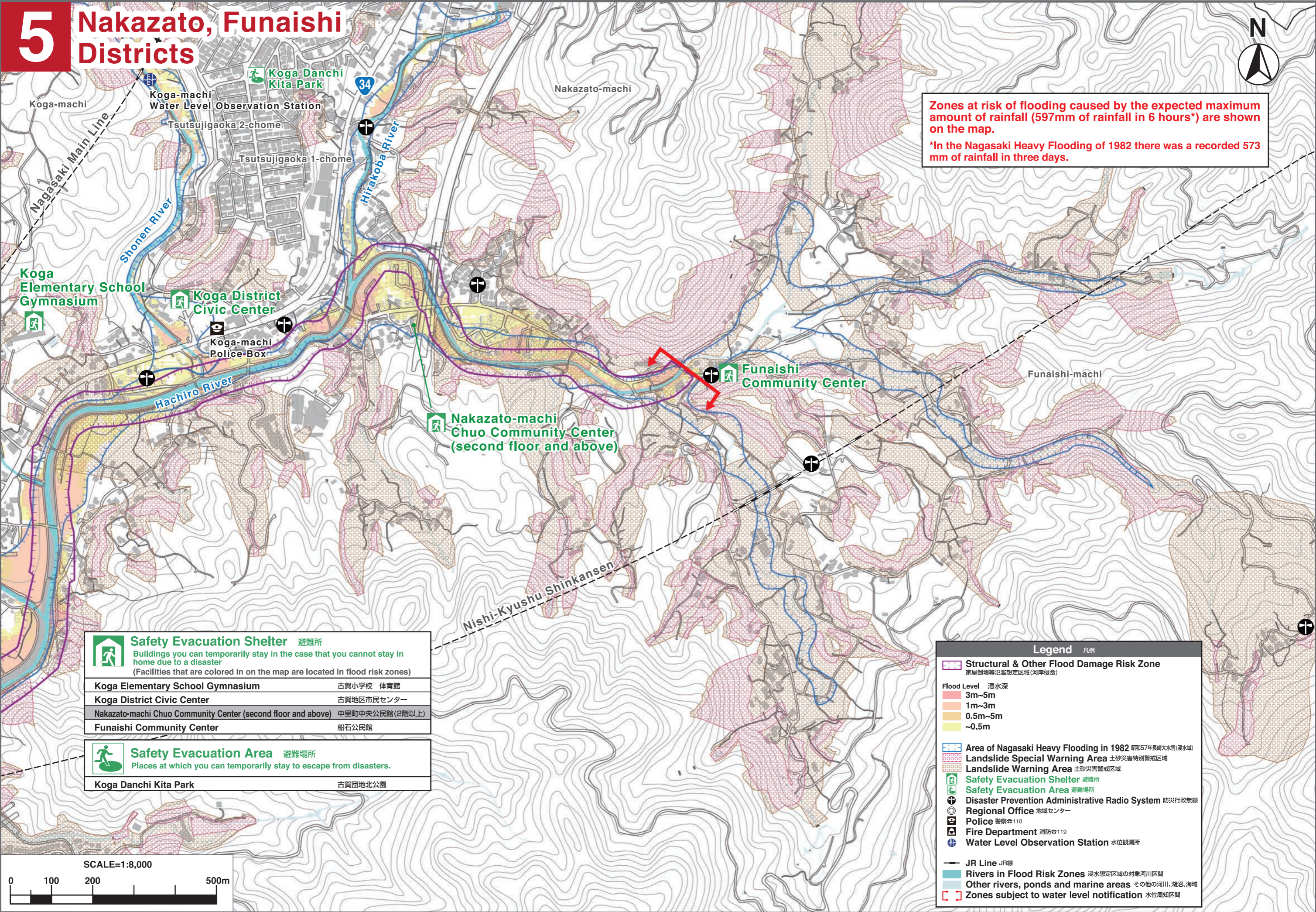
- Structural & Other Flood Damage Risk Zone 家屋倒壊等氾濫想定区域(河岸侵食)
- Flood Level 浸水深
 - 3m~5m
 - 1m~3m
 - 0.5m~5m
 - ~0.5m
- Area of Nagasaki Heavy Flooding in 1982 昭和57年長崎大水害(浸水域)
- Landslide Special Warning Area 土砂災害特別警戒区域
- Landslide Warning Area 土砂災害警戒区域
- Safety Evacuation Shelter 避難所
- Safety Evacuation Area 避難場所
- Disaster Prevention Administrative Radio System 防災行政無線
- Regional Office 地域センター
- Police 警察 110
- Fire Department 消防 119
- Water Level Observation Station 水位観測所
- JR Line JR線
- Rivers in Flood Risk Zones 浸水想定区域の対象河川区間
- Other rivers, ponds and marine areas その他の河川、湖沼、海域
- Zones subject to water level notification 水位周知区間

7 *This hazard map shows the presumed level of flooding due to an overflow of the Hachiro River System, which includes the Hachiro River, Hirakoba River, Shonen River, Matsubara River, Manose River, Sengenda River, Shimizu River, Utsutukawa River, and Nakao River. However, areas outside of these risk zones may experience flooding and/or the presumed level of flooding may differ in reality.

8 *This map displays the location of "Safety Evacuation Shelters (buildings) and Areas (spaces) to which you can go in the event of the most severe rainfall."

5

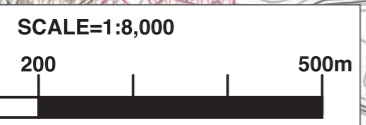
Nakazato, Funaishi Districts



Zones at risk of flooding caused by the expected maximum amount of rainfall (597mm of rainfall in 6 hours*) are shown on the map.
 *In the Nagasaki Heavy Flooding of 1982 there was a recorded 573 mm of rainfall in three days.

	Safety Evacuation Shelter 避難所 Buildings you can temporarily stay in the case that you cannot stay in home due to a disaster (Facilities that are colored in on the map are located in flood risk zones)
Koga Elementary School Gymnasium	古賀小学校 体育館
Koga District Civic Center	古賀地区市民センター
Nakazato-machi Chuo Community Center (second floor and above)	中里町中央公民館(2階以上)
Funaishi Community Center	船石公民館
	Safety Evacuation Area 避難場所 Places at which you can temporarily stay to escape from disasters.
Koga Danchi Kita Park	古賀団地北公園

Legend 凡例	
	Structural & Other Flood Damage Risk Zone 家屋倒壊等氾濫想定区域(河岸浸食)
	Flood Level 漫水深 3m~5m
	1m~3m
	0.5m~5m
	~0.5m
	Area of Nagasaki Heavy Flooding in 1982 昭和57年長崎大水害(浸水域)
	Landslide Special Warning Area 土砂災害特別警戒区域
	Landslide Warning Area 土砂災害警戒区域
	Safety Evacuation Shelter 避難所
	Safety Evacuation Area 避難場所
	Disaster Prevention Administrative Radio System 防災行政無線
	Regional Office 地域センター
	Police 警察 110
	Fire Department 消防 119
	Water Level Observation Station 水位観測所
	JR Line JR線
	Rivers in Flood Risk Zones 浸水想定区域の対象河川区間
	Other rivers, ponds and marine areas その他の河川、湖沼、海城
	Zones subject to water level notification 水位周知区間



9 *This hazard map shows the presumed level of flooding due to an overflow of the Hachiro River System, which includes the Hachiro River, Hirakoba River, Shonen River, Matsubara River, Manose River, Sengenda River, Shimizu River, Utsutukawa River, and Nakao River. However, areas outside of these risk zones may experience flooding and/or the presumed level of flooding may differ in reality.

10 *This map displays the location of "Safety Evacuation Shelters (buildings) and Areas (spaces) to which you can go in the event of the most severe rainfall."